



DECK FITTINGS AND FURNITURE
FOR LEISURE AND COMMERCIAL MARINE CRAFT

www.bailey-marine.co.uk



CONTENTS

ABOUT US	3	FILLERS, OUTLETS & POWERPOINTS	21
LATCHES	4	Watertight Stainless Steel Fillers	22
Watertight Stainless Steel Locker Latches (4kg Spring)	5	Extender / Reducer	22
Watertight Stainless Steel Locker Latches (12kg Spring)	6	Watertight Stainless Steel Waste Outlets	24
Watertight Stainless Steel Locker Latches (D-Ring)	8	Watertight Stainless Steel Deck Power Point	25
Watertight Stainless Steel Slam Latches	10	KEYS & OTHER MISCELLANEOUS	26
Watertight Stainless Steel Dog Latches	11	Keys	27
LOCKER CLAMPS	12	Watertight Stainless Steel Hoop Fixings	28
Watertight Stainless Steel Locker Clamps	13	Watertight Stainless Steel Pull Rings	29
DECK PLATES	14	CUSTOM ITEMS	30
Watertight Stainless Steel Deck Plates (Round)	16	Custom Items	31
Watertight Acetal Deck Plates (Round)	18	CONTACT US	32
Watertight Acetal Deck Plates (Rectangular / Square)	19		

ABOUT US

FOR DECADES, BAILEY MARINE HAS PROVIDED PRECISION ENGINEERED DECK FITTINGS AND FURNITURE - WATERTIGHT LATCHES, CLAMPS, CE MARKED DECK PLATES, FUEL FILLERS, WASTE OUTLETS, ELECTRICAL POINTS, AND MUCH MORE - TO COMMERCIAL AND LEISURE CUSTOMERS ACROSS THE WORLD.

Bailey Marine stands for function-led design. Developed by engineers with practical user experience of marine products, our range is manufactured to exacting standards in the UK. Each item is designed to be aesthetically-pleasing – polished stainless steel, flush or slim-line surface mountings, concealed fittings – while never compromising on function, making our fittings equally suited to both commercial and leisure market applications.

Using materials selected to withstand constant use in a harsh marine environment, particularly stainless steel and acetal, a plastic which is UV stable and has very low water absorption, Bailey Marine products are easily installed and durable and can be relied upon to perform year after year.

We also pride ourselves on our ability to provide custom solutions for almost any related application. Working to client requirements, we have provided

solutions to many leisure and commercial shipbuilders, as well as meeting the high specifications of military ship suppliers in the UK.

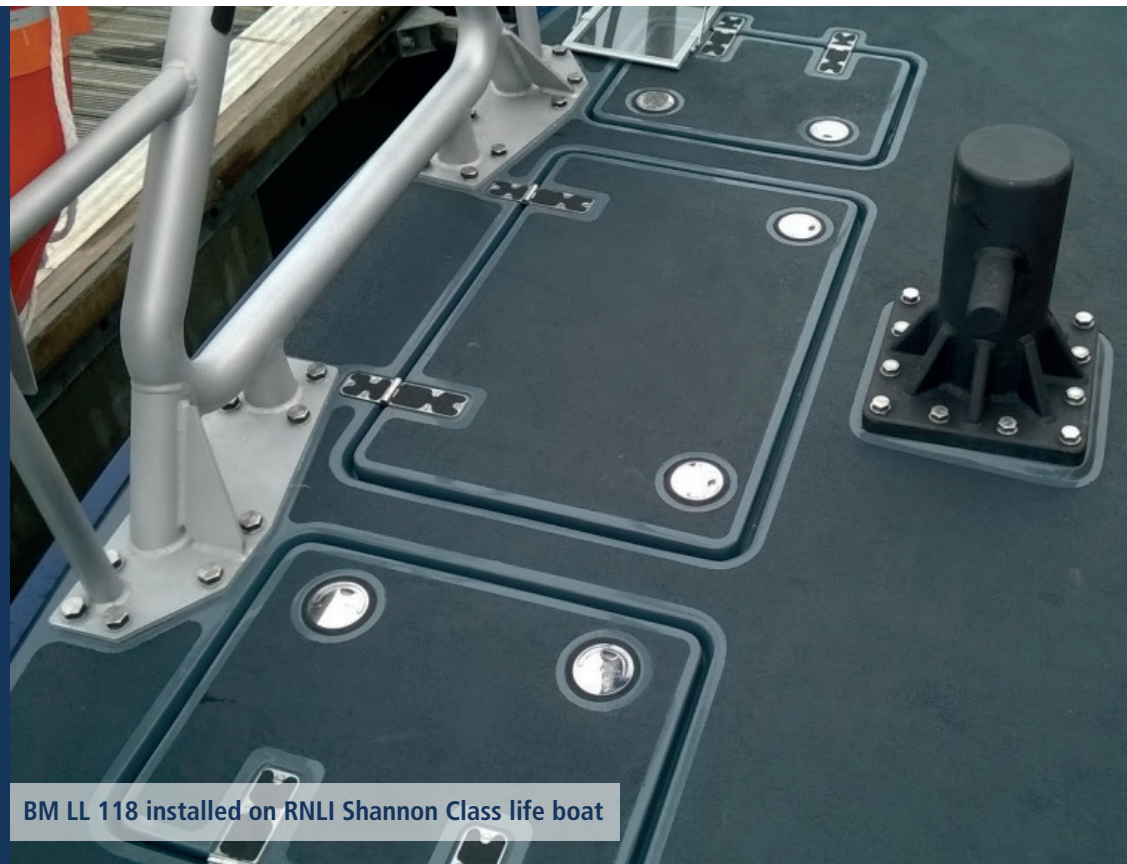
In 2018, we joined the Petersen Stainless Rigging group. Petersen has an enviable reputation for producing high quality stainless steel marine rigging products. Find out more at www.petersen-stainless.co.uk.



LATCHES

The Bailey Marine range of watertight latches includes locker, slam and dog latches to meet almost any onboard requirement – deck plates, flush panels, cupboards, small doors, deck furniture and sole boards.

Easy to install, our latches are manufactured in 316 stainless steel and 316 stainless steel/acetal, making them suitable for use both inside and outside, providing maximum corrosion resistance even in areas subjected to salt-water spray.



BM LL 118 installed on RNLI Shannon Class life boat

WATERTIGHT STAINLESS STEEL LOCKER LATCHES (4 KG SPRING)

CODE	DESCRIPTION	KEY	MATERIAL	HEAD DIAMETER (mm)	FLANGE DEPTH (mm)	HEIGHT ABOVE DECK (mm)	DECK HOLE REQUIRED (mm)	MAX. DECK THICKNESS (mm)	REACH (mm)	OPERATING LIMIT (mm)	SPRING TENSION (g)	WEIGHT (g)
BM LL 25 ** SM	Small latch ideally suited for locker closure, flooring and sole boards	BM L 25.8	316 stainless steel	25	3	3	16	14	36	30-43	4000	80
BM LL 25 ** FM	Small latch ideally suited for locker closure, flooring and sole boards	BM L 25.8	316 stainless steel	25	3	Flush mounted	16	14	36	30-43	4000	80
BM LL 26 ** SM	Small latch ideally suited for locker closure, flooring and sole boards	BM L 25.8	316 stainless steel	25	3	3	16	19-28	36	46-55	4000	85
BM LL 26 ** FM	Small latch ideally suited for locker closure.	BM L 25.8	316 stainless steel	25	3	Flush mounted	16	19-28	36	46-55	4000	85

For a locker latch with:	Straight arm	Cranked arm
Replace ** with the following when ordering:	A	B



BM LL 25 SM



BM LL 25 FM



BM LL 26 SM



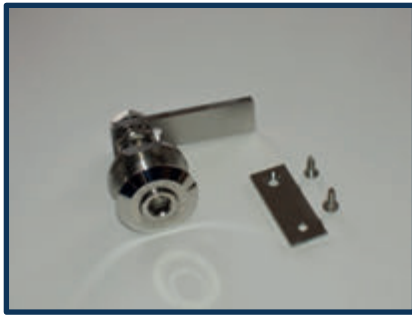
BM LL 26 FM

WATERTIGHT STAINLESS STEEL LOCKER LATCHES (12KG SPRING)

CODE	DESCRIPTION	KEY	MATERIAL	HEAD DIAMETER (mm)	BODY DEPTH (mm)	HEIGHT ABOVE DECK (mm)	DECK HOLE REQUIRED (mm)	MAX. DECK THICKNESS (mm)	ARM LENGTH (mm)	OPERATING LIMIT (mm)	SPRING TENSION (g)	WEIGHT (g)
BM LL 110** SM	Medium latch suitable for lockers and hatches.	BM LC 106	316 stainless steel	40	4	4	25	20	60	Straight arm: 36-54 Cranked arm: 26-44 or 46-64	12000	250
BM LL 110** FM	Medium latch suitable for lockers and hatches.	BM LC 106	316 stainless steel	40	4	Flush mounted	25	20	60	Straight arm: 36-54 Cranked arm: 26-44 or 46-64	12000	250
BM LL 111**	Concealed latch, which is fitted to the underside of hatch	BM LC 106	316 stainless steel	71	4	-	25	-	60	Straight arm: 36.5-54.5 Cranked arm: 26-44 or 46-64	12000	300
BM LL 112**	Medium latch suitable for lockers and hatches. With a lift D-ring.	BM LC 106	316 stainless steel	40	4.5	4.5	25	20	60	Straight arm: 36-54 Cranked arm: 26-44 or 46-64	12000	265
BM LL 113**	Medium latch ideally suitable for lockers and hatches. Insulated body.	BM LC 106	316 stainless steel and acetal	40	4	4	25	6-28	60	Straight arm: 52-62 Cranked arm: 62-72 or 42-52	12000	160
BM LL 114** SM	Medium latch suitable for lockers and hatches. With a lift D-ring.	BM LC 106	316 stainless steel	40	4.5	4.5	25	33	60	Straight arm: 52-61 Cranked arm: 62-71 or 42-51	12000	300
BM LL 114** FM	Medium latch suitable for lockers and hatches. With a lift D-ring.	BM LC 106	316 stainless steel	40	4.5	Flush mounted	25	33	60	Straight arm: 52-61 Cranked arm: 62-71 or 42-51	12000	300
BM LL 115** SM	Medium latch suitable for lockers and hatches.	BM LC 106	316 stainless steel	40	4.5	4.5	25	33	60	Straight arm: 52-61 Cranked arm: 62-71 or 42-51	12000	300
BM LL 115** FM	Medium latch suitable for lockers and hatches.	BM LC 106	316 stainless steel	40	4.5	Flush mounted	25	33	60	Straight arm: 52-61 Cranked arm: 62-71 or 42-51	12000	300
BM LL 116**	Medium latch suitable for lockers and hatches. With a lift D-ring.	BM LC 106	316 stainless steel and acetal	65	10	10	25	30	60	Straight arm: 42-65 Cranked arm: 52-75 or 32-55	12000	400
BM LL 117** SM	Medium latch suitable for lockers and hatches. With 21 mm flats on the body	BM LC 106	316 stainless steel	40	4.5	4.5	25	33	60	Straight arm: 52-61 Cranked arm: 62-71 or 42-51	12000	300
BM LL 117** FM	Medium latch suitable for lockers and hatches. With 21 mm flats on the body	BM LC 106	316 stainless steel	40	4.5	Flush mounted	25	33	60	Straight arm: 52-61 Cranked arm: 62-71 or 42-51	12000	300

For a locker latch with:	Straight arm	Cranked arm
Replace ** with the following when ordering:	A	B

WATERTIGHT STAINLESS STEEL LOCKER LATCHES (12KG SPRING)



BM LL 110.A SM



BM LL 110.A FM



BM LL 111.A



BM LL 112.B SM



BM LL 113.A SM



BM LL 114.A SM



BM LL 115.A FM



BM LL 116.A SM



BM LL 117.A FM



BM LL 117.A SM

WATERTIGHT STAINLESS STEEL LOCKER LATCHES (D RING)

CODE	DESCRIPTION	MATERIAL	HEAD DIAMETER (mm)	BODY DEPTH (mm)	HEIGHT ABOVE DECK (mm)	DECK HOLE REQUIRED (mm)	OVERALL LENGTH FROM DECK (mm)	ARM LENGTH (mm)	OPERATING LIMIT (mm)	Weight (g)
BM LL 118 **	90 degree operation to open/close	316 stainless steel and acetal	82	12	Flush mounted	40	Standard: 70 With cover: 86	Standard: 80 Gull wing: 67	29-37	Standard: 450 With cover: 505 Gull wing: 550
BM LL 118 SS **	90 degree operation to open/close	316 stainless steel	82	12	Flush mounted	40	Standard: 70 With cover: 86	Standard: 80 Gull wing: 67	29-37	Standard: 700 With cover: 755 Gull wing: 800
BM LL 118 F	Surface mounted, with flange for ease of installation	316 stainless steel and acetal	90	-	3	82	74	80	44-52	484
BM LL 118 SS F	Surface mounted with flange for ease of installation	316 stainless steel and acetal	90	-	3	82	74	80	44-52	734
BM LL 121 **	90 degree operation to open/close	316 stainless steel and acetal	54	9.5	Flush mounted	24	Standard: 80 With cover: 84	36	28-33	Standard: 150 With cover: 207
BM LL 121 SS **	90 degree operation to open/close	316 stainless steel	54	9.5	Flush mounted	24	Standard: 60 With cover: 84	36	28-33	Standard: 250 With cover: 307
BM LL 121 F	Surface mounted, with flange for ease of installation	316 stainless steel and acetal	59	-	3	54	58	36	41-46	198
BM LL 121 SS F	Surface mounted with flange for ease of installation	316 stainless steel and acetal	59	-	3	54	58	36	41-46	246

For a locker latch with:	Without acetal cover	With acetal cover	With gull wing arm
Replace ** with the following when ordering:	-	WC	GW

WATERTIGHT STAINLESS STEEL LOCKER LATCHES (D RING)



BM LL 118



BM LL 118 F



BM LL 118 SS



BM LL 118 WC



BM LL 118 SS WC



BM LL 118 GW



BM LL 121



BM LL 121 F



BM LL 121 SS



BM LL 121 SS WC



BM LL 121 WC

WATERTIGHT STAINLESS STEEL SLAM LATCHES

Code	DESCRIPTION	MATERIAL	BODY DIAMETER (mm)	BODY DEPTH (mm)	DECK HOLE REQUIRED (mm)	REACH OF ARM FROM CENTRE LINE (mm)	CENTRE LINE OF ARM FROM DECK (mm)	WEIGHT (g)
BM SL 100 **	A spring-loaded latch. Slam to close, and use the D-ring to open. This latch comes with a keep plate in white acetal.	316 stainless steel and acetal	82	12	42	58	40	462
BM SL 200 **	A spring-loaded latch. Slam to close, and use the D-ring to open. This latch comes with a keep plate in white acetal.	316 stainless steel and acetal	54	9.8	24	46	40	158

For a slam latch with:	Left hand / clockwise turn	Right hand / anti-clockwise turn
Replace ** with the following letters when ordering:	LH	RH



BM SL 100 RH (shown here with a 3 o'clock closure position)



BM SL 200 RH (shown here with a 3 o'clock closure position)

WATERTIGHT STAINLESS STEEL DOG LATCHES

CODE	DESCRIPTION	KEY	MATERIAL	HEAD DIAMETER (mm)	BODY FLANGE DIAMETER (mm)	BODY FLANGE DEPTH (mm)	HEIGHT ABOVE DECK (mm)	DECK HOLE REQUIRED (mm)	MAXIMUM DECK THICKNESS (mm)	REACH (mm)	OPERATING LIMIT (mm)	SCREW SIZE (mm)	WEIGHT (g)
BM LL 119	With or without cover. Use a 8.5 inch or 21.6cm winch handle.	Use 8.5 inch / 21.6cm winch handle.	316 stainless steel and acetal	75	70	7	4	46	40	60	68-73	16	600
BM LL 127	Latch with a 90 degree turn.	BM LC 106	316 stainless steel	40	40	4	4	25	20	52.5	50-60	12	268
BM LL 130 **	With inside left or right hand opening handle which is 116mm	Use 8.5 inch / 21.6cm winch handle.	316 stainless steel and acetal	75	70	7	4	46	50	48	77	16	750

For a dog latch with:	Left hand turn	Right hand turn
Replace ** with the following letters when ordering:	LH	RH



BM LL 119



BM LL 127

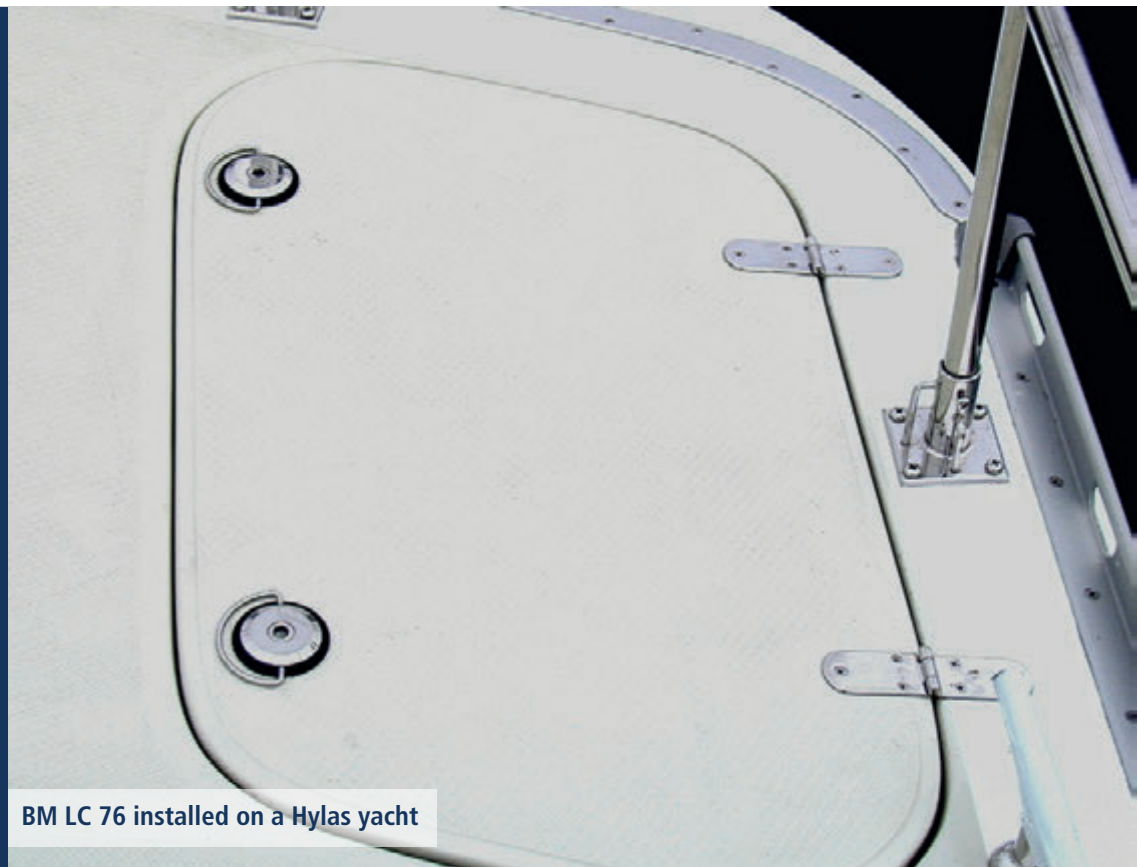


BM LL 130

LOCKER CLAMPS

Our range of watertight clamps in different sizes and styles will suit almost any on-board application. Turning to close, the clamp will hit a stop and continued turning will pull the hatch down further.

Made in highly polished stainless steel for corrosion resistance in salt-water marine environments, our locker clamps are also available with lift rings for ease of use. For many models a tamper-proof version is available, providing extra on-board security. Speak to our team for more information.



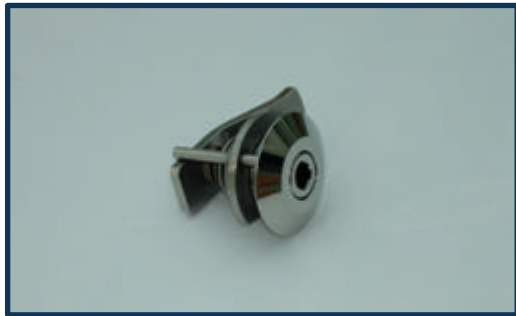
BM LC 76 installed on a Hylas yacht

WATERTIGHT STAINLESS STEEL LOCKER CLAMPS

CODE	DESCRIPTION	KEY	MATERIAL	HEAD DIAMETER (mm)	HEIGHT ABOVE DECK (mm)	DECK HOLE REQUIRED (mm)	OPERATING LIMIT (mm)	MAX. THICKNESS OF HATCH (mm)	REACH (mm)	MAIN SCREW DIAMETER	OVERALL LENGTH (mm)	WEIGHT (g)
BM LC 30	Surface mounted latch	BM LC 30.6	316 stainless steel	40	4	25	12	10	40	M10	48	160
BM LC 70 SM **	Surface mounted latch.	BM LC 106	316 stainless steel	40	4	25	43-60	20	52.5	M12	77	400
BM LC 70 FM **	Flush mounted latch.	BM LC 106	316 stainless steel	40	Flush mounted	25	43-60	20	52.5	M12	77	400
BM LC 71 SM **	Surface mounted latch.	BM LC 106	316 stainless steel	54	4	25	76-91	35	52.5	M12	107	475
BM LC 71 FM **	Flush mounted latch.	BM LC 106	316 stainless steel	54	Flush mounted	25	76-91	35	52.5	M12	107	475
BM LC 72	A custom made item, this clamp has a knurled knob.	-	316 stainless steel	68	14	25	50-56	17	54	M12	95	700
BM LC 74 **	A clamp with a longer shaft for thicker decks.	BM LC 106	316 stainless steel	54	4	25	100-120	75	52.5	M12	137	600
BM LC 76 **	This clamp has a lift ring as standard, with a black acetal flange.	BM LC 106	316 stainless steel and acetal	65	10	25	67-86	30	53.5	M12	101	500
BM LC 77 **	This clamp has a lift ring as standard, with a black acetal flange.	BM LC 106	316 stainless steel and acetal	65	10	25	67-86	22-45	53.5	M12	101	550
BM LC 123	A heavy-duty clamp with built-in stop.	BM LC 123.8	316 stainless steel	54	4	40	60-70	22	70	M14	91	760

For a clamp with:	Standard	Lift ring	Tamper-proof version
Replace ** with the following letters when ordering:	-	LR	TP

WATERTIGHT STAINLESS STEEL LOCKER CLAMPS



BM LC 30



BM LC 70 SM LR



BM LC 70 SM TP



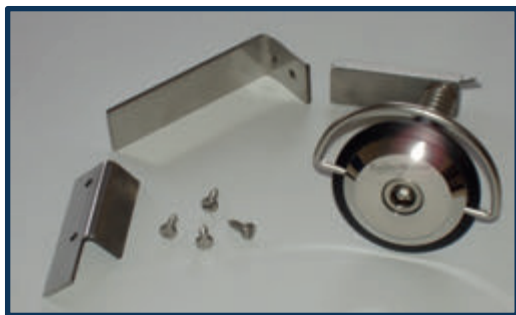
BM LC 71 SM TP



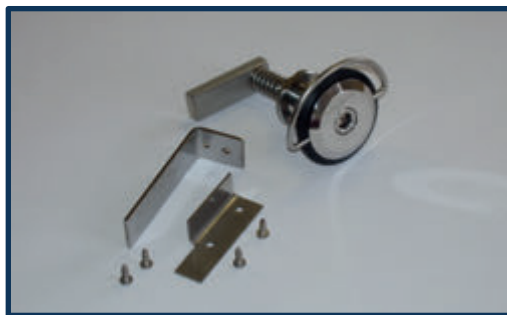
BM LC 72



BM LC 74



BM LC 76



BM LC 77



BM LC 123

DECK PLATES

Whether flush or surface mounted, round, rectangular or square, rugged acetal or polished stainless steel etched with your own logo, we have the watertight deck plate to suit your vessel and application.

All our deck plates have CE certification, meeting the requirements of EN ISO 12216:2002 for plates to be fitted in the deck and stern areas of ocean-going vessels, including for inspection hatches on fuel and water tanks.



BM 88 A installed on a Cockwells boat

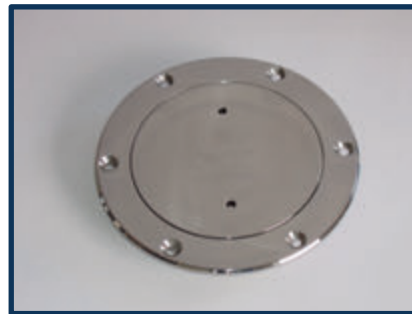
WATERTIGHT STAINLESS STEEL DECK PLATES (ROUND)

CODE	DESCRIPTION	KEY	MATERIAL	FLANGE DIAMETER (mm)	HEIGHT ABOVE DECK (mm)	DECK HOLE REQUIRED (mm)	BORE DIAMETER (mm)	WEIGHT (g)
BM 80	Surface mounted with a flange and visible fixings	BM 80.4	316 stainless steel	120	3	90	77.5	620
BM 80 A	Surface mounted with a flange and visible fixings. Hatched finish to the plate.	BM 80.4	316 stainless steel	120	3	90	77.5	620
BM 82	Surface mounted with a flange and visible fixings	BM 80.4	316 stainless steel	150	3	120	103	1145
BM 82 A	Surface mounted with a flange and visible fixings. Hatched finish to the plate.	BM 80.4	316 stainless steel	150	3	120	103	1145
BM 86	Surface mounted with a flange and visible fixings	BM 85.5	316 stainless steel	189	5	158	142	2300
BM 86 A	Surface mounted with a flange and visible fixings. Hatched finish to the plate.	BM 85.5	316 stainless steel	189	5	158	142	2300
BM 88	Surface mounted with a flange and visible fixings	BM 85.5	316 stainless steel	295	6	250	212	8500
BM 88 A	Surface mounted with a flange and visible fixings. Hatched finish to the plate.	BM 85.5	316 stainless steel	295	6	250	212	8500

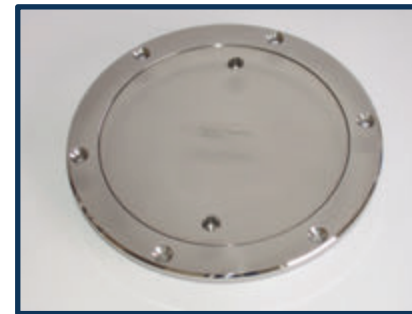
Please note, we can remove the bevel on these items to allow for flush mounting.



BM 80



BM 82



BM 86

WATERTIGHT ACETAL DECK PLATES (ROUND)

CODE	DESCRIPTION	KEY	MATERIAL	COLOUR	FLANGE DIAMETER (mm)	HEIGHT ABOVE DECK (mm)	DECK HOLE REQUIRED (mm)	LENGTH UNDER FLANGE (mm)	BORE DIAMETER (mm)	WEIGHT (g)
BM 83	Surface mounted with a flange and visible fixings. Integrated handle so key is unnecessary.	BM 80.4	Acetal with 316SS handle	Black/White	215	4.5	170	25.5	140	865
BM 83 A	Surface mounted with a flange and visible fixings. Integrated handle so key is unnecessary. Hatched finish to plate.	BM 80.4	Acetal with 316SS handle	Black/White	215	4.5	170	25.5	140	865
BM 85	Surface mounted with a flange and visible fixings.	BM 85.5	Acetal	Black/White	215	4.5	170	25.5	140	750
BM 85 A	Surface mounted with a flange and visible fixings. Hatched finish to plate.	BM 85.5	Acetal	Black/White	215	4.5	170	25.5	140	750
BM 87	Surface mounted with a flange and visible fixings.	BM 87.5	Acetal	Black/White	150	4	120	18	95	350
BM 87 A	Surface mounted with a flange and visible fixings. Hatched finish to plate.	BM 87.5	Acetal	Black/White	150	4	120	18	95	350
BM 89	Surface mounted with a flange and visible fixings.	BM 85.5	Acetal	Black/White	295	6	250	21	210	1780
BM 89 A	Surface mounted with a flange and visible fixings. Hatched finish to plate.	BM 85.5	Acetal	Black/White	295	6	250	21	210	1780
BM 91	Surface mounted with a flange and visible fixings. Integrated handle so key is unnecessary.	BM 85.5	Acetal with 316SS handle	Black/White	295	6	250	21	210	2000
BM 91 A	Surface mounted with a flange and visible fixings. Integrated handle so key is unnecessary. Hatched finish to plate.	BM 85.5	Acetal with 316SS handle	Black/White	295	6	250	21	210	2000

WATERTIGHT ACETAL DECK PLATES (ROUND)



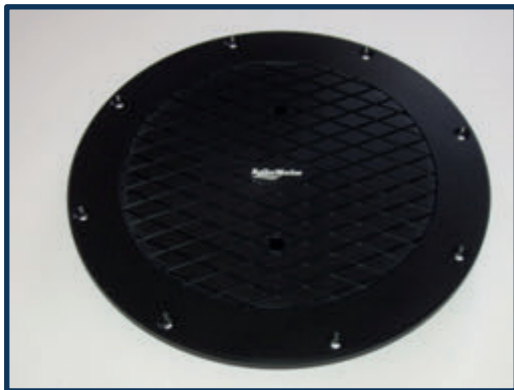
BM 83 (WHITE)



BM 85 A (BLACK)



BM 87 (BLACK)



BM 89 A (BLACK)

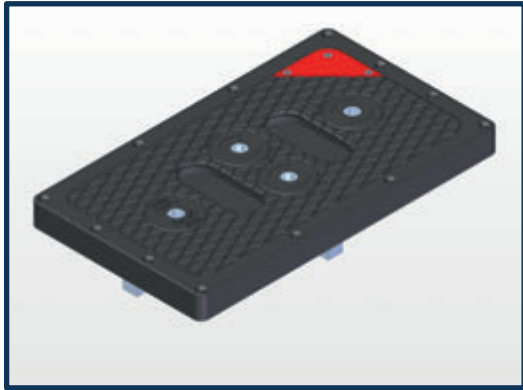


BM 91 A (BLACK)

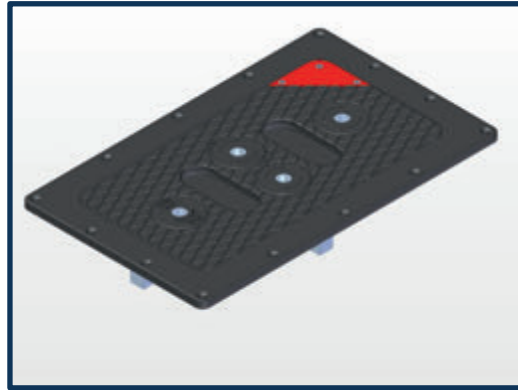
WATERTIGHT ACETAL DECK PLATES (RECTANGULAR/SQUARE)

CODE	DESCRIPTION	KEY	MATERIAL	EXTERNAL LENGTH (mm)	EXTERNAL WIDTH (mm)	INTERNAL LENGTH (mm)	INTERNAL WIDTH (mm)	HEIGHT ABOVE DECK (mm)	FRAME DEPTH (mm)	OVERALL THICKNESS (mm)	WEIGHT (g)
BM 97	Watertight acetal deck plate with 4 x 316 stainless steel clamps with seals.	BM LC 106 A	Acetal with 316SS clamps	400	230	320	150	Flush mounted	30	82.2	4200
BM 97 F	Watertight acetal deck plate with 4 x 316 stainless steel clamps with seals. Flange for easy fitting.	BM LC 106 A	Acetal with 316SS clamps	434	264	320	150	12	30	82.2	4400
BM 100	Watertight acetal deck plate with 4 x 316 stainless steel clamps with seals.	BM LC 106 A	Acetal with 316SS clamps	400	290	320	210	Flush mounted	30	72	6500
BM 100 F	Watertight acetal deck plate with 4 x 316 stainless steel clamps with seals. Flange for easy fitting.	BM LC 106 A	Acetal with 316SS clamps	434	324	320	210	10	30	82	6700
BM 200	Watertight acetal deck plate with 4 x 316 stainless steel clamps with seals.	BM LC 106 A	Acetal with 316SS clamps	450	330	365	250	Flush mounted	30	82	7200
BM 200 F	Watertight acetal deck plate with 4 x 316 stainless steel clamps with seals. Flange for easy fitting.	BM LC 106 A	Acetal with 316SS clamps	484	364	365	250	10	30	82	7400
BM 250	Watertight acetal deck plate with 6 x 316 stainless steel clamps with seals.	BM LC 106 A	Acetal with 316SS clamps	550	550	450	450	Flush mounted	35	82	14000
BM 250 F	Watertight acetal deck plate with 6 x 316 stainless steel clamps with seals. Flange for easy fitting.	BM LC 106 A	Acetal with 316SS clamps	594	594	450	450	12	35	82	16000
BM 275	Watertight acetal deck plate with 6 x 316 stainless steel clamps with seals.	BM LC 106 A	Acetal with 316SS clamps	1100	700	1000	600	Flush mounted	35	72	28000
BM 275 F	Watertight acetal deck plate with 6 x 316 stainless steel clamps with seals. Flange for easy fitting.	BM LC 106 A	Acetal with 316SS clamps	1144	744	1000	600	12	35	72	31000

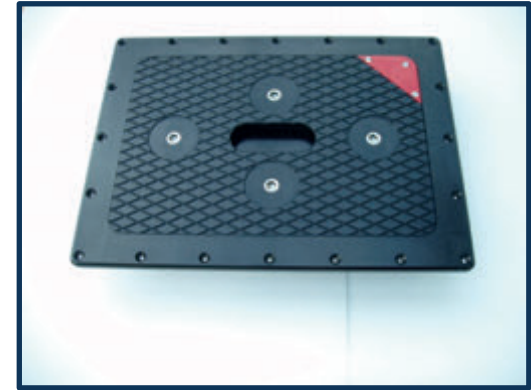
WATERTIGHT ACETAL DECK PLATES (RECTANGULAR/SQUARE)



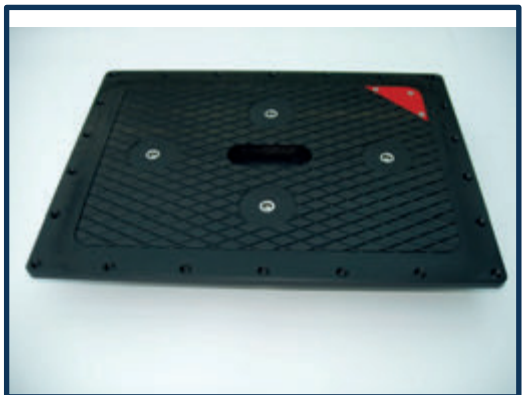
BM 97



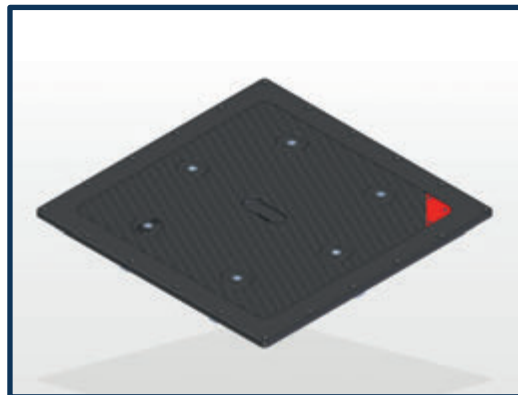
BM 97 F



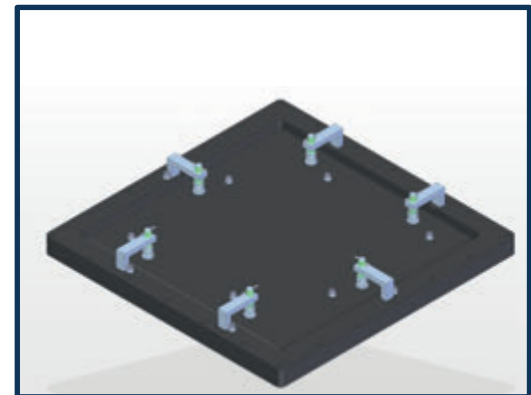
BM 100 F



BM 200



BM 250



BM 250 underside showing clamps

FILLERS, OUTLETS AND POWERPOINTS

Our range of watertight deck fillers are for water, diesel, black and grey wash, gas and petrol mix, and come etched with the required text as well as an icon when the end use is for fuel.

Our waste outlets are similarly designed, they come etched with waste, black waste or grey waste.

All our fillers and waste outlets can be supplied surface, or flush mounted, with visible or concealed fittings to suit the aesthetic of your vessel.

Our deck power points are designed to allow usage of personal equipment while on deck. A standard CE approved mains socket is built into a waterproof stainless steel enclosure.



BM FC 50.1A FM installed on an Oyster yacht

WATERTIGHT STAINLESS STEEL FILLERS

CODE	DESCRIPTION	KEY	MATERIAL	FLANGE DIAMETER (mm)	FLANGE DEPTH (mm)	HEIGHT ABOVE DECK (mm)	DECK HOLE REQUIRED (mm)	INTERNAL BORE (mm)	SPIGOT DIAMETER (mm)	SPIGOT LENGTH (mm)	WEIGHT (g)
BM FC 50 **	Surface mounted with a flange and visible fixings.	BM 80.4	316 stainless steel	120	3	3	90	40	50	34	1025
BM FC 50 ** T	Surface mounted with a flange and visible fixings. 2" BSP threaded spigot.	BM 80.4	316 stainless steel	120	3	3	90	40	50	34	1025
BM FC 50 ** BR	Bevel removed for flush mounting. Visible fixings.	BM 80.4	316 stainless steel	117	3	Flush mounted	90	40	50	34	1023
BM FC 50 ** BR T	Bevel removed for flush mounting. Visible fixings and a 2" BSP threaded spigot.	BM 80.4	316 stainless steel	117	3	Flush mounted	90	40	50	34	1023
BM FC 50 ** FM	Flush mounted with concealed fixings.	BM 80.4	316 stainless steel	90	18	Flush mounted	90	40	50	34	1023
BM FC 50 ** FM T	Flush mounted with concealed fixings. 2" BSP threaded spigot.	BM 80.4	316 stainless steel	90	18	Flush mounted	90	40	50	34	1023
BM FC 52 ** FM	Flush mounted with concealed fixings. D-ring.	-	316 stainless steel	90	18	Flush mounted	90	40	50	34	1350
BM FC 58 **	Surface mounted with flange and visible fixings. D-ring.	BM 80.4	316 stainless steel	120	3	3	90	60	63.5	158	1250

For a filler engraved:	Diesel	Water	Petrol	Grey Wash	Black Wash	Gas	Petrol Mix
Replace ** with the following letters when ordering:	1	1A	1B	1D	1E	1F	1G

EXTENDER / REDUCER

CODE	DESCRIPTION	MATERIAL	BODY DIAMETER (mm)	OVERALL LENGTH	BORE DIAMETER	WEIGHT
BM R 110	Adapter to reduce 50mm to 38mm (2" to 1.5") diameter	316 stainless steel	52-40	82	44-32	250g
BM E 111	Adapter to extend 50mm to 63.5mm (2" to 2.5") diameter	316 stainless steel	64.5-52	92	56-44	400g

WATERTIGHT STAINLESS STEEL FILLERS



BM FC 50.1



BM FC 50.1 FM T



BM FC 52 FM



BM FC 58

WATERTIGHT STAINLESS STEEL WASTE OUTLETS

CODE	DESCRIPTION	KEY	MATERIAL	FLANGE DIAMETER (mm)	FLANGE DEPTH (mm)	OVERALL LENGTH UNDER FLANGE (mm)	HEIGHT ABOVE DECK (mm)	DECK HOLE REQUIRED (mm)	INTERNAL BORE (mm)	SPIGOT DIAMETER (mm)	SPIGOT LENGTH (mm)	WEIGHT (g)
BM W 55 **	Surface mounted with a flange and visible fixings.	BM 80.4	316 stainless steel	120	-	107	3	90	34	38	35	2100
BM W 55 ** BR	Flush mounted with a flange and visible fixings.	BM 80.4	316 stainless steel	117	3	107	Flush mounted	90	34	38	35	2100
BM W 55 ** FM	Flush mounted with concealed fixings.	BM 80.4	316 stainless steel	90	18	110	Flush mounted	90	40	50	34	1023

For a filler engraved:	Waste	Black waste	Grey waste
Replace ** with the following letters when ordering:	1A	1B	1C



BM W 55.1A



BM W 55.1B BR

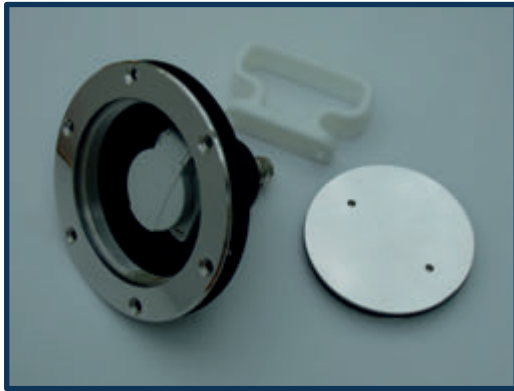


BM W 55.1A FM

Complies to BS 7162:1990; EN 24567:1989; ISO 4567:1978

WATERTIGHT STAINLESS STEEL DECK POWER POINT

CODE	DESCRIPTION	KEY	MATERIAL	FLANGE DIAMETER (mm)	HEIGHT ABOVE DECK (mm)	DECK HOLE REQUIRED (mm)	OVERALL LENGTH (mm)	WEIGHT (g)
BM PP 101	Surface mounted with visible fixings. This item is CE marked and conforms to 94/25/EC Recreational Craft Directive. It uses the following harmonised standards: BS EN ISO 13297: 2001; BS EN 60092-507: 2000; and BS 8450: 2006.	BM 80.4 or BM 80.4 A	316 stainless steel and black acetal	150	5	120	120	1500



BM PP 101

KEYS AND OTHER MISCELLANEOUS

Securing and protecting your boat is paramount, both when moored and when on open water. Many of our latches, clamps, deck plates and other products self close, but some require a key to secure. Ensure you always have the right key to hand – and contact us direct for spares.

Our stainless steel hoop fixings were designed specifically for radar hoops which often need to be reclined to provide clearance under bridges etc., and come in a range of sizes to suit all vessels.

Pull rings are flush-fitting handles for lockers and other doors.



BM 200 F installed on an ASV C-Cat 3

KEYS

CODE	DESCRIPTION	MATERIAL	COMPATIBLE ITEMS
BM 80.4	Pig nose key for round inserts	316 stainless steel	All variations of BM 80 to 83, BM FC 50, BM FC 58, BM W 55, BM PP 101
BM 80.4 A	Pig nose key for round inserts	Plastic	All variations of BM 80 to 83, BM FC 50, BM FC 58, BM W 55, BM PP 101
BM 85.5	Pig nose key for round inserts	316 stainless steel	All variations of BM 85, BM 86, BM 89
BM 87.5	Pig nose key for round inserts	316 stainless steel	All variations of BM 87
BM LC 106	Hex key. Has a hole drilled at the bottom to take a tamper-proof pin and a hole near top for a lanyard.	316 stainless steel	All variations of BM LL 110 to 117, and BM LC 70 to 77
BM LC 106 A	For rectangular and square deck plates	316 stainless steel	All variations of BM 97, BM 100, BM 200, BM 250 and BM 275
BM LC 25.8	Hex key with a ring attached to enable attachment to a lanyard	316 stainless steel	All variations of BM L 25 and BM L 26
BM LC 30.6	Hex key with a ring attached to enable attachment to a lanyard	316 stainless steel	BM LC 30
BM LC 123.8	Hex key	316 stainless steel	BM LC 123
BM LC 123.9	Hex key, T-bar version	316 stainless steel	BM LC 123



BM 80.4



BM 80.4 A



BM 85.5



BM 87.5



BM LC 106



BM 25.8



BM LC 123.8

WATERTIGHT STAINLESS STEEL HOOP FIXINGS

CODE	DESCRIPTION	MATERIAL	FLANGE DIAMETER (mm)	HEIGHT ABOVE DECK (mm)	DECK HOLE REQUIRED (mm)	MAXIMUM HATCH THICKNESS (mm)	SCREW SIZE
BM HF 26	Surface mounted	316 stainless steel	25	3	16	30	M8 x 70
BM HF 71 **	Surface mounted	316 stainless steel	54	4	25	35	M12

For a hoop fixing with overall length in mm of:	70	80	100	120	150	120 with extended thread
Replace ** with the following letters when ordering:	A	B	C	D	E	F



BM HF 26



BM HF 71 F

WATERTIGHT STAINLESS STEEL PULL RINGS

CODE	DESCRIPTION	MATERIAL	BODY DIAMETER (mm)	BODY DEPTH (mm)	LENGTH OF STUDS FROM UNDERSIDE (mm)	MAXIMUM HATCH THICKNESS (mm)	WEIGHT (g)
BM LR 300	Flush-fitting pull ring with bead blast finish under handle	316 stainless steel	73.7	8	45	30	275
BM LR 301	Flush-fitting pull ring with bead blast finish under handle	316 stainless steel	48.7	5.8	45	35	100



BM LR 300



BM LR 301

CUSTOM ITEMS

Our reputation has been built on developing solutions that meet our customers' needs. Each item is designed to be aesthetically-pleasing while never compromising on function.

Over the years we have manufactured custom items for both leisure and commercial vessels – oversize bulwark door catches, stainless steel stacking bar stools, complex concealed hinges, shore power connectors, special sized deck plates, titanium fittings... the list goes on. Several custom designs have eventually become part of our product range.

If you need something in a different size, material or finish, or even a variation to a standard design, speak to our team.



Custom surface mounted fuel filler

CUSTOM ITEMS



Custom stainless steel hinges



Custom stainless steel stool bases



Custom titanium fuel filler and waste outlet



Custom stainless steel fuel filler



Custom acetal locker latch



Custom latch in naval brass

CONTACT US

Bailey Marine has joined the Petersen Stainless Rigging group. More information about Petersen and their range of stainless steel products for marine, lifting, structural and other applications can be found at **www.petersen-stainless.co.uk**.

For more information on our range, or to discuss your specific requirements further, please visit **www.bailey-marine.co.uk** or contact us direct:

Head Office

Petersen Stainless Rigging
Cowen Road, Blaydon-on-Tyne,
Tyne and Wear, NE21 5TW

T: +44 (0)191 414 0156
E: sales@petersen-stainless.co.uk

Scandinavia and the Baltic

Petersen Stainless Rigging
Gothenburg

T: +46 73-388 23 88
E: sales@petersen-stainless.se

North & South America

Petersen Stainless Rigging & Aerospace
Annapolis

T: +1 (401) 835-1850
E: sales@petersen-stainless.com

East Asia and Australasia

Petersen Stainless SEA
Kuala Lumpur

T: +60 17 320 8110
E: sea@petersen-stainless.co.uk