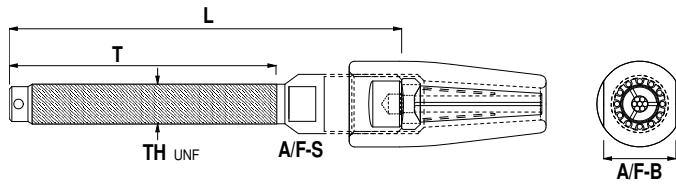


High Quality Stainless Steel Swageless Compression Terminals



The part codes in the tables are for 1X19 wire rope construction. Different Cones and Crown Rings are used for 7 strand and Dyform. Add suffix -7 or -C for these assemblies.

Swageless Compression Terminals - Imperial Threaded Studs

Product Code	W	Thread	T	L	A/F-S	A/F-B	WEIGHT
CTS03	3mm	1/4"	47mm	67mm	6mm	9.5mm	24g
CTS04DS	4mm	1/4"	47mm	67mm	8mm	11mm	35g
CTS04	4mm	5/16"	54mm	76mm	8mm	11mm	42g
CTS05DS	5mm	5/16"	54mm	80mm	9mm	14mm	65g
CTS05	5mm	3/8"	68mm	89mm	9mm	14mm	75g
CTS06DS	6mm	3/8"	68mm	95mm	11mm	17mm	110g
CTS06	6mm	7/16"	75mm	99mm	11mm	17mm	130g
CTS06US	6mm	1/2"	90mm	117mm	11mm	17mm	145g
CTS07	7mm	1/2"	90mm	119mm	14mm	20mm	199g
CTS08DS	8mm	1/2"	90mm	125mm	16mm	22mm	297g
CTS08	8mm	5/8"	100mm	135mm	16mm	22mm	347g
CTS10	10mm	5/8"	100mm	140mm	17mm	26mm	458g
CTS10US	10mm	3/4"	120mm	158mm	19mm	26mm	790g
CTS11	11mm	3/4"	120mm	158mm	19mm	26mm	790g
CTS12	12mm	3/4"	120mm	169mm	22mm	32mm	892g
CTS14	14mm	7/8"	140mm	195mm	24mm	36mm	1379g
CTS16	16mm	1"	160mm	227mm	28mm	40mm	1970g
CTS19	19mm	1 1/8"	180mm	245mm	32mm	44mm	2699g
CTS22	22mm	1 1/4"	200mm	270mm	36mm	52mm	4240g
CTS26	26mm	1 3/8"	220mm	311mm	44mm	64mm	6675g

Swageless Compression Terminals - Metric Threaded Studs

Product Code	W	Thread	T	L	A/F-S	A/F-B	WEIGHT
CTSM6x03	3mm	M6	47mm	63mm	6mm	9.5mm	24g
CTSM6x04	4mm	M6	47mm	68mm	8mm	11mm	35g
CTSM8x04	4mm	M8	54mm	74mm	8mm	11mm	42g
CTSM8x05	5mm	M8	54mm	80mm	9mm	14mm	65g
CTSM10x05	5mm	M10	68mm	90mm	9mm	14mm	75g
CTSM10x06	6mm	M10	68mm	95mm	11mm	17mm	110g
CTSM12x06	6mm	M12	90mm	117mm	11mm	17mm	145g
CTSM12x07	7mm	M12	90mm	123mm	14mm	20mm	199g
CTSM12x08	8mm	M12	90mm	129mm	16mm	22mm	297g
CTSM16x08	8mm	M16	100mm	134mm	16mm	22mm	340g
CTSM16x10	10mm	M20	120mm	158mm	19mm	26mm	800g

PRODUCT NEWS

The latest development for compression fittings results in a termination at least as strong as the rated breaking load of the wire rope. The unique star shaped Crown Ring positions and holds the wire strands in place, eliminating the requirement for awkward wire end bending.

The shallow angled cone establishes direct mechanical grip on the core and all outer strands. Stainless steel grade EN10088 1.4404 (316) is used on all parts with the exception of the crown ring which is manufactured from Aluminium Bronze.

No sealant or packing is required.