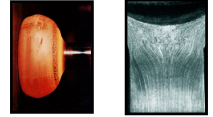


## High Quality Stainless Steel 316 Shackles

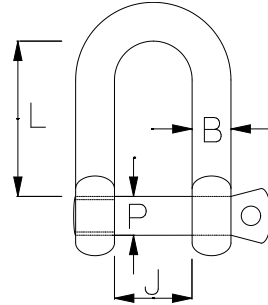
Contrary to upset forms produced in several press operations, electrical upsetting engenders no kinks or interruption of grain flow. The surface of the shackle is free from wrinkles or burrs. The cold shank remains totally undamaged. Even when the shackle heads are pressed into their finished shape, the grain structure of the external contour retains a high degree of accuracy.



Inspection certificate BS EN 10204 3.1B available on request. This must be specified at the time of order.

### D Shackle

#### PIN TYPES



*Refer to shake proof & socket head pin shackle specification sheets for details on pins. Specialist Shackles to OEM's design also available. Contact our sales department for a very competitive quote.*

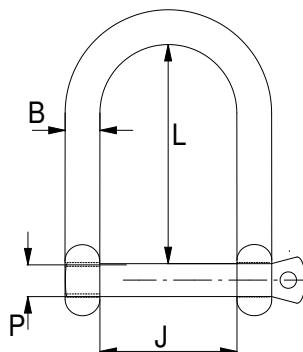
**\* Typical breaking loads**

High Quality Stainless Steel 316 - D Shackle						
Product Code	PIN (P)	BODY (B)	JAW (J)	INSIDE (L)	M.B.L.	WEIGHT
D04	4mm	4mm	8mm	16mm	800 Kgs	7g
D05	5mm	5mm	10mm	20mm	1500 Kgs	13g
D06	6mm	6mm	13mm	25mm	1950 Kgs	24g
D08	8mm	8mm	16mm	32mm	3000 Kgs	53g
D10	9.5mm	9.5mm	19mm	38mm	4800 Kgs	97g
D11	11mm	11mm	22mm	44mm	6000 Kgs	152g
D12	12.7mm	12.7mm	26mm	52mm	7500 Kgs	237g
D16	16mm	14.3mm	29mm	58mm	10000 Kgs	450g
D19	19mm	16mm	32mm	64mm	14000 Kgs	585g

*Suffix code with pin type. No suffix = standard pin, RS = Shake Proof Pin (available from 5mm to 16mm), C = Socket Head Pin (available from 5mm to 19mm).*

### Wide D Shackle

#### PIN TYPES



*Refer to shake proof & socket head pin shackle specification sheets for details on pins. Specialist Shackles to OEM's design also available. Contact our sales department for a very competitive quote.*

**\* Typical breaking loads**

High Quality Stainless Steel 316 Wide D Shackle						
Product Code	PIN (P)	BODY (B)	JAW (J)	INSIDE (L)	M.B.L.	WEIGHT
WD05	5mm	5mm	20mm	30mm	750 Kgs	15g
WD06	6mm	6mm	25mm	32mm	1300 Kgs	31g
WD08	8mm	8mm	32mm	48mm	2500 Kgs	65g
WD10	10mm	10mm	40mm	60mm	3300 Kgs	116g

*Suffix code with pin type. No suffix = standard pin, C = Socket Head Pin (available from 5mm to 19mm).*