

# Structural SBS450 Bar System

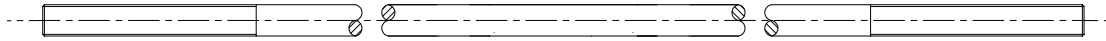
## The System

The SBS-450 range of tie bars are manufactured from a high quality stainless steel grade 316 with rolled threads to BS3643. Manufactured to order and available up to 6m lengths. Longer lengths are available by using bar couplers.



### SBS-450 Bars are generally used on :

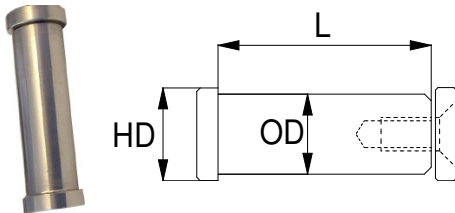
- Membrane Structures
- Lightweight Steel Structures
- Footbridges
- Glass Facades



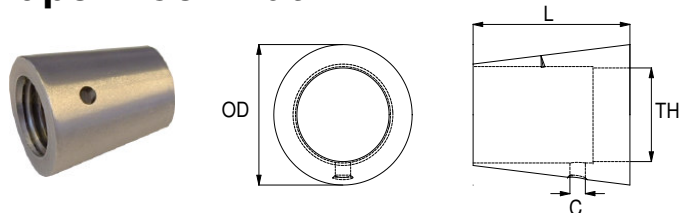
PART CODE	THREAD (Metric)	ULTIMATE STRESS kN *	YIELD STRESS kN *	STRESS AREA mm <sup>2</sup>	YIELD LOAD kN *	ULTIMATE LOAD kN *
SBM10	M10 x 1.50	700	450	58	26.1	40.6
SBM12	M12 x 1.75	700	450	84	37.8	58.8
SBM16	M16 x 2.00	700	450	157	70.7	109.9
SBM20	M20 x 2.50	700	450	245	110.3	171.5
SBM24	M24 x 3.00	700	450	353	158.9	247.1
SBM27	M27 x 3.00	700	450	459	206.6	321.3
SBM30	M30 x 3.50	700	450	561	252.6	485.8
SBM33	M33 x 3.50	700	450	694	312.3	571.9
SBM36	M36 x 4.00	700	450	817	367.7	638.2
SBM39	M39 x 4.00	700	450	976	439.2	784.7

\*in accordance with BS5950-1:2000 and EN 1993-1-8:2005

## Clevis Pin



## Taper Lock Nut



PART CODE	L	OD	HD	C/S SCREW
BDHP10	25mm	10mm	12.7mm	M3 x 6
BDHP12	32mm	12mm	14mm	M5 x 12
BDHP16	40mm	16mm	19mm	M5 x 12
BDHP20	50mm	20mm	24mm	M6 x 12
BDHP24	60mm	24mm	28mm	M6 x 12
BDHP27	70mm	27mm	32mm	M6 x 12
BDHP30	75mm	30mm	35mm	M8 x 16
BDHP33	80mm	33mm	38mm	M8 x 16
BDHP36	90mm	36mm	42mm	M8 x 16
BDHP39	100mm	39mm	45mm	M8 x 16

PART CODE	TH	OD	L	C
TLNM10	M10 x 1.50	15mm	17.0mm	3.5mm
TLNM12	M12 x 1.75	19mm	20.4mm	3.5mm
TLNM16	M16 x 2.00	25mm	27.2mm	3.5mm
TLNM20	M20 x 2.50	30mm	34.0mm	3.5mm
TLNM24	M24 x 3.00	36mm	40.8mm	4mm
TLNM27	M27 x 3.00	42mm	45.9mm	4mm
TLNM30	M30 x 3.50	45mm	51.0mm	4mm
TLNM33	M33 x 3.50	48mm	56.1mm	5mm
TLNM36	M36 x 4.00	54mm	61.2mm	5mm
TLNM39	M39 x 4.00	60mm	66.3mm	5mm

## Technical Data

The Hi-MOD SBS450 bars are manufactured from stainless steel grade 316 EN10088 1.4401/4 which offers higher corrosion resistance. The pins are designed in accordance with BS 5950-1:2000 and EN 1993-1-8:2005. All components are produced at our manufacturing facility in the North of the England using the latest technology in CNC equipment and produced in accordance with our quality systems. Bar lengths are available up to 6m. Lengths exceeding 6m are also available by utilising a bar coupler. All accessories are finished to a N4 standard (240 grit satin). Bars are produced to a bright drawn finish. \*\*NOTE\*\* If the forks are at maximum adjustment then half a diameter of thread will be visible after the Taper Nut has been fully tightened.